

# Weldcraft™ W-375

Hand-Held Water-Cooled  
TIG Welding Torches



## QUICK SPECS

### Model

W-375 Super Cool

### Applications

Aerospace	Pipe and tube fabrication
Aluminum fabrication	Precision metal fabrication
Aluminum ship repair	Pressure vessel fabrication
Automotive	Shipbuilding
Exotic material fabrication	Tool and die
Manufacturing	Tube and pipe
Maintenance and repair	Vocational

**Rated Output** DC: 375 A, AC: 265 A

**Duty Cycle** 100%

**Electrode Range** .020–1/8 in. (0.5–3.2 mm)

## W-375 Super Cool™ TIG torch

The W-375 Super Cool is a reliable water-cooled torch designed for demanding, high-amperage applications. The W-375 Super Cool is engineered with innovative technology and welding efficiency in mind.

**Super Cool technology** provides additional surface area to increase cooling efficiency and capacity.

**Reduce downtime** due to overheating through consistent water-cooled performance.

**Extend torch life** with dependable water-cooled technology.

**Reduce leakage** of gas and water through secure mechanical fittings and connections.

*Note: Torches delivered may vary slightly from images shown.*



W-375 Super Cool  
(301253)



**Miller Electric Mfg. LLC**  
An ITW Welding Company  
1635 West Spencer Street  
P.O. Box 1079  
Appleton, WI 54912-1079 USA

**Equipment Sales US and Canada**  
Phone: 866-931-9730  
International Phone: 920-735-4554

MillerWelds.com



# Torch Packages

MODEL	BRAIDED RUBBER		BRAIDED RUBBER WITH 50 MM DINSE
<b>Name</b>	<b>12.5 ft. (3.8 m)</b>	<b>25 ft. (7.6 m)</b>	<b>25 ft. (7.6 m)</b>
W-375 Super Cool™	<b>301253012</b>	<b>301253025</b>	<b>301253001*</b>

Torch packages include torch body, handle, power cable, gas hose, water hose, and long back cap.

\*Cable cover included.

## Connectors

### 1-piece power cable connectors



**195377**  
50 mm Dinse-style with water return line for water-cooled torch.



**301884**  
50 mm Dinse-style connector that adapts machines with flow through gas valves to coolers.



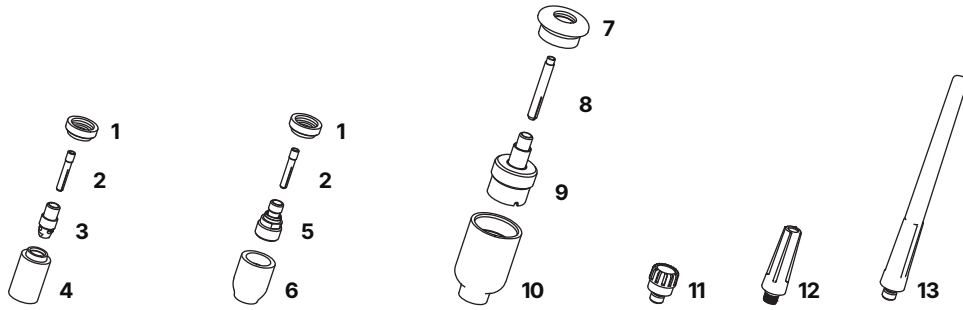
**225028**  
50 mm thread-lock-style for water-cooled torch.



**45V11**  
Power cable adapter for water-cooled torch.

MACHINES	CONNECTION TYPE	1-PIECE POWER CABLE CONNECTORS
<b>TIG Machines</b>		
CST™ 280/282	50 mm Dinse-style	<b>195377</b>
Dynasty® 200/210/280/300/350/400	50 mm Dinse-style	<b>195377</b>
Dynasty® 700/800	50 mm thread-lock	<b>225028</b>
Maxstar® 200/210/280/350/400	50 mm Dinse-style	<b>195377</b>
Maxstar® 700/800	50 mm thread-lock	<b>225028</b>
Syncrowave® 200/210/212	50 mm Dinse-style gas thru	<b>301884</b>
Syncrowave® 250 DX/300/350 LX/400	50 mm Dinse-style	<b>195377</b>
	1/2 in. stud	<b>45V11</b>
<b>Multiprocess Machines</b>		
Dimension™ 302/452/NT 450/650/652	1/2 in. stud	<b>45V11</b>
Dynasty® 280 DX Multiprocess/300 Multiprocess	50 mm Dinse-style	<b>195377</b>
Multimatic® 235/255	50 mm Dinse-style	<b>195377</b>
PipeWorx	1/2 in. stud	<b>45V11</b>
XMT® 304/350/400	50 mm Dinse-style	<b>195377</b>
XMT® 450/650	1/2 in. stud	<b>45V11</b>
<b>Engine-Driven Machines</b>		
Most Big Blue®, Trailblazer®, Bobcat™, Blue Star® and Wildcat® models	1/2 in. stud	<b>45V11</b>
Big Blue® 450 Duo CST	50 mm Dinse-style	<b>195377</b>
<b>Other Adapter</b>		
	Stud to Dinse-style adapter	<b>232728</b>

# Consumables (Refer to Owner's Manual for additional replacement parts.)



NON-GAS LENS									
<b>Electrode Size — inch (mm)</b>	<b>.040 (1.0)</b>			<b>1/16 (1.6)</b>			<b>3/32 (2.4)</b>		<b>1/8 (3.2)</b>
1 Insulator (required)	598882			598882			598882		598882
2 Collet	13N21			13N22			13N23		13N24
3 Collet Body	13N26			13N27			13N28		13N29
<b>Nozzle Size — size # (inch)</b>	<b>3 (3/16)</b>	<b>4 (1/4)</b>	<b>5 (5/16)</b>	<b>6 (3/8)</b>	<b>7 (7/16)</b>	<b>8 (1/2)</b>	<b>10 (5/8)</b>	<b>12 (3/4)</b>	<b>Short</b>
4 Alumina	—	13N08	13N09	13N10	13N11	13N12	13N13	—	—
* Lava	—	13N14	13N15	13N16	13N17	13N18	13N19	—	—
* Long Lava	796F70	796F71	796F72	796F73	—	—	—	—	—
* X-Long Lava	796F74	796F75	796F76	796F77	—	—	—	—	—
GAS LENS									
<b>Electrode Size — inch (mm)</b>	<b>.040 (1.0)</b>			<b>1/16 (1.6)</b>			<b>3/32 (2.4)</b>		<b>1/8 (3.2)</b>
1 Insulator (required)	598882			598882			598882		598882
2 Collet	13N21			13N22			13N23		13N24
5 Gas Lens	45V42			45V43			45V44		45V45
<b>Nozzle Size — size # (inch)</b>	<b>3 (3/16)</b>	<b>4 (1/4)</b>	<b>5 (5/16)</b>	<b>6 (3/8)</b>	<b>7 (7/16)</b>	<b>8 (1/2)</b>	<b>10 (5/8)</b>	<b>12 (3/4)</b>	<b>Short</b>
6 Alumina Gas Lens	—	53N58	53N59	53N60	53N61	53N61S	—	—	—
LARGE DIAMETER GAS LENS									
<b>Electrode Size — inch (mm)</b>	<b>.040 (1.0)</b>			<b>1/16 (1.6)</b>			<b>3/32 (2.4)</b>		<b>1/8 (3.2)</b>
7 Insulator (required)	54N63-20			54N63-20			54N63-20		54N63-20
8 Collet	13N21L			13N22L			13N23L		13N24L
9 Large Diameter Gas Lens	45V0204S			45V116S			45V64S		995795S
<b>Nozzle Size — size # (inch)</b>	<b>3 (3/16)</b>	<b>4 (1/4)</b>	<b>5 (5/16)</b>	<b>6 (3/8)</b>	<b>7 (7/16)</b>	<b>8 (1/2)</b>	<b>10 (5/8)</b>	<b>12 (3/4)</b>	<b>Short</b>
10 Large Diameter Gas Lens	—	—	—	57N75	—	57N74	53N88	53N87	53N89
* Large Diameter Gas Lens-L	—	—	—	57N75L	—	57N74L	53N88L	53N87L	—
* Large Diameter Gas Lens-XL	—	—	—	57N75XL	—	57N74XL	53N88XL	53N87XL	—
BACK CAPS									
11 Short	41V33	12 Medium	41V35	13 Long	41V24				

\*Not shown.

# Tungsten

## Tungsten for the most demanding TIG welding applications!

Available in four types and industry-standard diameters, our line of Weldcraft™ tungsten electrodes has undergone rigorous testing to ensure the highest quality and durability. Color-coded packages include ten 7-inch (175 mm) tungsten electrodes.

*Note: Refer to manufacturer SDS sheets for proper preparation and safety. Use proper ventilation/capture during preparation. Refer to manufacturer warning regarding ventilation.*



Type	Diameter in. (mm)	Part #	
<b>2% Ceriated (EWCe-2)</b>			
Performs well in DC welding and arc starting at low-current settings, and offers excellent performance in AC processes.	0.040 (1.0)	<b>WC040X7</b>	
	1/16 (1.6)	<b>WC116X7</b>	
	3/32 (2.4)	<b>WC332X7</b>	
	1/8 (3.2)	<b>WC018X7</b>	
Provides excellent arc starting, arc stability and re-ignition, and less tip erosion in AC or DC welding. Can substitute for 2% Thoriated.	5/32 (4.0)	<b>WC532X7</b>	
	<b>2% Lanthanated (EWLa-2)</b>		
	0.040 (1.0)	<b>WL2040X7</b>	
	1/16 (1.6)	<b>WL2116X7</b>	
Forms a clean, balled end when heated and provides good arc stability for AC welding with a balanced or unbalanced squarewave or sine wave.	3/32 (2.4)	<b>WL2332X7</b>	
	1/8 (3.2)	<b>WL2018X7</b>	
	5/32 (4.0)	<b>WL2532X7</b>	
	<b>Pure (EWP)</b>		
Combines the best of all alloying elements, and provides excellent arc stability in AC or DC welding.	0.040 (1.0)	—	
	1/16 (1.6)	<b>WP116X7</b>	
	3/32 (2.4)	<b>WP332X7</b>	
	1/8 (3.2)	<b>WP018X7</b>	
Rare Earth (EWG)	5/32 (4.0)	—	
	0.040 (1.0)	—	
	1/16 (1.6)	<b>WG116X7</b>	
	3/32 (2.4)	<b>WG332X7</b>	
Pure (EWP)	1/8 (3.2)	<b>WG018X7</b>	
	5/32 (4.0)	—	

# Replacement Parts

<b>Torch Body</b>		
W-375		<b>301253</b>
<b>Handle</b>		
Knurled		<b>269335</b>
<b>Braided Rubber Power Cables and Hoses</b>		
	<b>12.5 ft. (3.8 m)</b>	<b>25 ft. (7.6 m)</b>
Power Cable	<b>269764</b>	<b>269765</b>
Water Hose	<b>269766</b>	<b>269767</b>
Gas Hose	—	<b>269771</b>

# Genuine Miller® Accessories



### Gas Lens Kit AK4GL

Includes one short back cap, one of each size (#6, #7, #8) alumina

nozzle, and one of each size (1/16, 3/32, 1/8 inch) of the following: gas lens, collet, and 7-inch 2% ceriated tungsten electrode.



### Accessory Kit AK4C

Includes one long back cap, one of each size

(#5, #6, #7) alumina nozzle, and one of each size (1/16, 3/32, 1/8 inch) of the following: collet, collet body, and 7-inch 2% ceriated tungsten electrode.

### Extension Kit

**EK-1-25-R** 25 ft. (7.6 m), rubber

### Cable Covers

**WC0183** 11.75 ft. (3.6 m)

For use with torch package 301253012.

**WC0182** 24.25 ft. (7.4 m)

For use with torch packages 301253025 and 301253001.



### Wireless Remote

#### Foot Control 301580

For remote current and contactor control.

Receiver plugs directly into the 14-pin receptacle of Miller machine. 90-foot (27.4 m) operating range.



### Wireless Remote Hand Control 301582

For remote current and contactor control. Receiver plugs directly into the 14-pin receptacle of Miller machine. 300-foot (91.4 m) operating range.



### RCC-14 Remote

#### Contactor and Current Control 151086

East/west rotary-motion fingertip control attaches to TIG torch using two hook-and-loop fasteners. Includes 26.5-foot (8 m) cord with 14-pin plug.



### RCCS-14 Remote

#### Contactor and Current Control 043688

North/south rotary-motion fingertip control attaches to TIG torch using two hook-and-loop fasteners. Includes 26.5-foot (8 m) cord with 14-pin plug.



### Low-Conductivity

#### TIG Coolant 043810

Must be ordered in quantities of four.

One-gallon recyclable plastic bottle. Miller coolants contain

a base of ethylene

glycol and deionized water to protect against freezing to -37° Fahrenheit (-38°C) or boiling to 227° Fahrenheit (108°C).

Distributed by:

